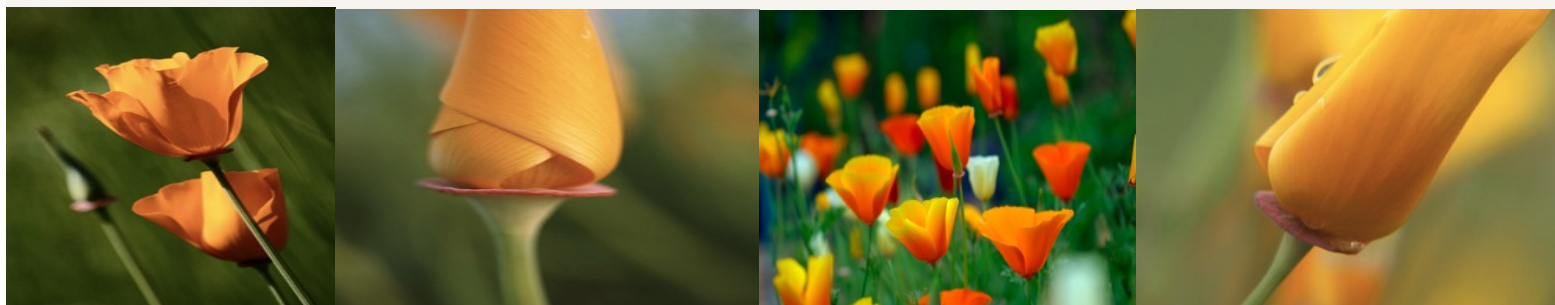


You are receiving this eNewsletter because you are a CGCI club/affiliate/APS president, district director, CGCI chairman or have subscribed to receive it or your club president/district director subscribed for you. You can modify/update your subscription via the link at the bottom of this eNewsletter. To view past eNewsletter, [click here](#). [Click here](#) to subscribe. Encourage your garden club members to subscribe. Any questions? Contact [CGCI eNewsletter Chairman](#). To forward this eNewsletter, follow the instructions at the bottom of this eNewsletter to send to one or multiple people. **Please do not forward through your internet provider** as this may be reported as spam coming from California Garden Clubs, Inc. Thank you.



eNewsletter of California Garden Clubs, Inc.

June 2011 Vol. 3-6

[Julie A. West](#), President
[California Garden Clubs, Inc.](#) is a Member of [Pacific Region](#),
[National Garden Clubs, Inc.](#)



Excerpts from CGCI President Julie West's Acceptance Speech, Convention, May 2011

This is an exciting - and humbling - moment for me; exciting because of the momentum already underway in CGCI and humbling because I am keenly aware of all that has been done by my predecessor Maryanne Lucas and by the former CGCI presidents who have made CGCI what it is today.

Let me share with you something that was found in Cathy Biggins' garden club files that her family gave us after her sudden death in January of this year. The author is John Ruskin.

*Kind hearts are the garden;
Kind thoughts are the root;
Kind words are the blossoms;
Kind deeds are the fruit.*

I am forever grateful to each one of you.

I would not give up one minute of the last 6 years learning and preparing me for these next two years. Membership helped me learn where garden clubs are located throughout the state. Joelle Holford, then New Clubs Chairman, and I traveled around California to help organize new clubs and promote membership in CGCI.

I learned awards by handling Award Finances for 3 years. I saw what clubs did in their community, their activities and projects from the books of evidence entered and displayed the Awards Room each year at Convention.

The opportunity to learn about California Garden Clubs, Inc. as an organization presented itself when asked by former President Robin Pokorski to coordinate and compile CGCI's 75 year history. The things I learned on that project made me realize what we can accomplish as the federation of 284 garden clubs, 53 plant societies and 19 affiliates when we work as a team to meet our objectives.

"Believe it and you will achieve it" must have been CGCI's motto.

- *CGCI supported several plant seed collecting expeditions to China, Tibet, the Andes and Costa Rica;*
- *Member clubs funded numerous projects including the California Poppy Reserve in Antelope Valley that we will visit during the 2012*

Wildflower Conference;

- *The redwood groves in Prairie Creek State Park were purchased and dedicated to CGCI, NCSGC (now NGC) and CGCI's founding president, Elvenia J. Slosson, that we hope to visit during the 2012 Fall Board meeting, and*
 - *CGCI supported several joint conservation projects with The Nature Conservancy and California State Parks Foundation that are all written about in "The Diamond Years."*



To help us work together as a team to achieve CGCI's objectives, as an example, we will research bringing back the Anza-Borrego Desert State Park project that CGCI clubs supported from 1969 to 2006. They still need our financial support as a long-term project to purchase private holdings within the park's boundaries. Did you know that Anza-Borrego Desert State Park is the largest state park in California and also the Nation, with almost 500,000 acres that reach from Riverside County to the Mexican border?

In addition, we are proposing a new five-year state project by adopting Project Mission Blue in partnership with Golden Gate National Parks Conservancy. Member clubs will have the unique opportunity to financially support propagating two species of lupine using high school students to help save the federally endangered Mission Blue Butterfly. CGCI will be recognized for its support in numerous ways, but the best satisfaction will be if we are successful increasing the butterflies dwindling population of 25,000. Wouldn't it be great to hear about CGCI on the national evening news?

The President's Project for 2011-2013 is near and dear to my heart. Permanent educational signage for Sonoma State University's Native Plant Garden will recognize CGCI on each sign for which money is raised. Our goal is to fund three signs for the Riparian, Wetland/Marsh and Oak Savannah plant communities, so that everyone who visits this 4-acre outdoor classroom will learn about what they are seeing. CGCI has the opportunity to make a difference where no signage exists today. [See more about Julie West's President's Project by [clicking here.](#)]

Garden club members are the soul, the nerve and hope of CGCI. Be the change you wish to see in the world whether it is within your club, your community or your personal life. Problems are opportunities each of us faces. Leadership is about solving problems, getting results and moving forward into the future.

All boards start out as groups – people who are looking out for themselves, their own egos and self-preservation. My challenge to you is the following:

Are you going to be a group of individuals working independently OR are you going to work together as a team to achieve the organization's objectives, a board that speaks in unison as a single voice? I hope you choose the latter. A sign on Ronald Reagan's desk stated: "It is amazing what you can accomplish when you don't care who gets the credit." Working together, we can overcome any obstacle presented and accomplish great things that our 80 years of history has shown us. Explore the possibilities in conservation, gardening, creativity and inspiration with me. Be the

difference!

In closing, I want to acknowledge my gratitude to each of you for offering me this wonderful opportunity as we prepare for another chapter in CGCI's distinguished history. Thank you.



Highlights from 80th Convention

Convention:

- NGC President **Renee Blaschke** was a guest.
- Approval of bylaw and policy changes - will be in minutes online soon.
- Approval of bid from Web Tech Therapy for CGCI website application modules to improve the website.
- Ratification of 2014 CGCI Convention - San Fernando Valley District, Chairmen: [Robin Pokorski](#) and [Maryanne Lucas](#).
- Ratification of 2014 CGCI Fall Board Meeting - Cascade District, Chairman: **Anne Mendonsa**.
- Approved that symposium restricted funds be made available to the local judges councils that are responsible for hosting the judges council banquet during conventions with the same current guidelines and restrictions up to \$500.

Executive Committee for 2011-2013 Term:

- President: [Julie A. West](#)
- First Vice President: [Rita Desilets](#)
- Second Vice President: [Sue Bennett](#)
- Third Vice President: [Pat Clayes](#)
- Recording Secretary: [Geri May Thirloway](#)
- Corresponding Secretary: [Joelle Holford](#)
- Financial Secretary: [Shane Looper](#)
- Treasurer: [Joan Patten](#)
- Parliamentarian: [Greg Pokorski](#)

Organizational/Post-Convention Meetings:

- **Jackie Jackman & Rosalie Hooper** are now members of the Circle of Poppies!
- *Golden Gardens* advertising rates will be, per issue, \$75 for a quarter page, \$125 for a half page, and \$200 for a full page, with a 10% discount for two or more consecutive issues for 2011-2013. [Send advertising possibilities to [Julie West](#).]
- [George Speer](#) was approved to serve concurrently as District Director Coordinator, Zip Code Club Finder Services Chairman and Palomar District

Director.

- [George Perko](#) was approved to serve concurrently as CGCI's Financial Advisor, a member of the Budget & Finance Committee and Bay Bridges District Director.
- The 2011-2012 proposed CGCI Budget and *Golden Gardens* Budget were approved -- will be in minutes and posted on the website soon.
- Julie West's President's Project - [Kenneth M. Stocking Native Plant Garden at Sonoma State University](#) - was approved. Project will focus on educating the community in value and use of California native plants. The goal is three additional educational wayfinding signs to be added to the garden as each \$7500 fundraising goal is achieved. Riparian; Marsh/Wetland; Oak Savannah. [Click here](#) to read more about the President's project and how to donate to it.
- CGCI will continue as a sponsor of the San Francisco Flower & Garden Show, March 21-25, 2012 in San Mateo.
- New Rules of Order for meetings were adopted for the 2011-2013 term - will be posted on the website.
- CGCI & Wafa (World Association of Flower Arrangers) will link websites.
- Approved of a new sponsor for the CGCI membership cards -- [Soiland](#).
- New project, [Project Mission Blue](#), approved.
- Yearbook printer's bid approved.
- Chairmen's reports will now be no longer than 2 minutes (instead of 3).
- Written reports (100 words or less) at board meetings and convention will now be attached to the minutes for the sake of preserving CGCI's history.
- Approved registration and late registration fees for 2011 Fall Board Meeting.
- [Greg Pokorski](#) was ratified as Parliamentarian.
- [Joan Craig](#) will serve as chairman of the Board of Trustees.
- Nominating Committee members: Chairman, [Kathy Bramhall](#), [Carol Amenta](#), [Nancy Johnson](#), [Carole Lung](#), [Merrilee Ray](#), [Sandy Rogers](#), [Carlotta Wixon](#).

Calendar Ratifications:

- September 27-28, 2011 - Gardening Study School, Course IV, Golden Foothills District.
- October 28-29, 2011 - Bi-Refresher (Gardening & Landscape Design), Valley Center Library, Valley Center. Sponsor: Dos Valles Garden Club of Palomar District. Barbara Watzke, Chairman, Nancy Abernethy, Co-Chairman.
- February 6-9, 2012 - Winter Board Meeting, The Cliffs Resort, Pismo Beach, Montana de Oro District.
- February 12-14, 2012 - CGCI Flower Show Judges Symposium, Handlery Hotel, San Diego.
- April 4-6, 2012 - Wildflower Conference, Holiday Inn, Palmdale.
- April 12-20, 2012 - River Cruise - The Netherlands (CGCI Fundraiser).

New California Law Which Affects Voting Rights

Did you know that Assembly Bill (AB) 1233 was signed into law and took effect on January 1, 2010? As the CGCI Parliamentarian serves on the CGCI board of directors and the Executive Committee, he/she must now have all membership rights, including voting privileges. Check your club and district bylaws to make sure that you are in compliance with this law. To review this law, [click here](#).



Update on California State Parks

By [Chuck Goodwin](#), Legislation/Government Chairman

Excerpts from Chuck Goodwin's Report at Convention, May 2011

This Chairman has been reporting to you on the financial crisis in the California State Parks since the 2009 Fall Board. At that time it was expected that as many as 100 of the more than 270 park units faced closure. It was estimated that as much as \$20.2 million general fund dollars would be cut from the State Parks budget.

The CGCI Board of Directors adopted a position paper, at 2010 Winter Board, to “Support the Preservation and Maintenance of California State Parks.” CGCI urged the development of long-term fiscal and the best management practices available to insure that every California State Park will exist for future generations. The position paper was promoted in *Golden Gardens* and the e-Newsletter.

The 2010 Convention report announced that the final impact for the year was that, while no parks were permanently closed, most units had reduced services, mostly through reduced days of operation or seasonal closures. The General Election of November 2010 contained, among other measures, Proposition 21 which would place an \$18 surcharge on the vehicle license fee, raising more than \$500 million annually. Sponsored by the California Parks Foundation, the measure was soundly defeated by the voters.

Then on May 13, 2011, Governor Brown announced that 70 state parks across California will be closed, possibly beginning July 2012, eliminating as many as 220 jobs. The \$22 million budget cut will help to shrink the state’s \$26 billion deficit. About \$75 million has been cut out of the parks budget over the past decade. Park staffing is currently at 1979 levels, but the system has 500,000 more acres and 10 million more visitors.



The closure list was evaluated based on the parks' historic significance, number of visitors, revenue generated and the ability to physically close them. It is estimated that the parks will retain 92% of the 65 million annual visitors and 94% of existing revenue. There is on-going discussions between legislators and the governor over possible tax measures placed on future ballots and legislation passed aimed at helping cities and counties (and nonprofits) enter long-term agreements to manage the closed parks.

For information on the California State Parks closure list, [click here](#).
For information on the California State Parks Foundation, [click here](#).



Here Is Your Opportunity to Become a CGCI Award Sponsor!

If you, your club or your district are interested in sponsoring the CGCI award program, the following awards need sponsors for the 2011-2013 term; awards to be presented at the 2012 and 2013 conventions.

C-9 -- Bird Conservation

Section A - Educational exhibit at flower show, club meeting or public location
which promotes an interest in the preservation of bird life - \$20 yearly

Section B - Instructions for making birdhouses or bird feeders - \$20 yearly

Section C - Bird program given at a club meeting - \$20 yearly

PR-2, 2b - Club Newsletters (2 sheets) - \$35 yearly

PR-2, 2c - Club Newsletters (3 or more sheets) - \$35 yearly

J-9a - Horticulture Award - for junior gardeners grades 1-3 - \$25 yearly

J-9b - Horticulture Award - for junior gardeners grades 4-6 - \$25 yearly

For work in any phase of horticulture -- junior gardeners

If you become a sponsor of one, two or all of these awards, you will have the option on your Award Sponsor Statement (which will be mailed to you in June/July) to remit the award amount annually or in one payment for the 2011-2013 term.

If interested, please contact the 2011-2013 Awards Chairman, [Pat Claves](#).

Your support of the CGCI awards program and all of the goals and objectives of CGCI and NGC are very much appreciated!



News from WAF A

America's Firsts

By Liza Weiham,
WAF A Public Relations Director



Among the many exciting activities to be experienced at *This Glorious Earth* are the demonstrations. There are four in total; the Grand Masters and International Designers will present one demonstration each, while the American demonstration will be held twice.

The theme of the International group is "My Homeland" and that of the American group is "America's First."

For the "America's First" demonstration, six American designers have been chosen to interpret concepts that were uniquely American in origin.

Included in this selection are: the Wright Brothers, Ben Franklin's Bi-Focals, Barb Wire, Strauss Blue Jeans, Skyscrapers and The Panama Canal.

[VIEWARTICLE](#)

[Click here](#) to see many more photos of fabulous designs from WAF A's website -- **The World Association of Floral Arrangers!** By the way, WAF A's website and CGCI's website are now linked!

Did you know that the following designers from California will participate in WAF A's World Flower Show in Boston? **Kiwi DeVoy, Sonja Longley, Charlotte Masson and Pauline Sechi!**

Back to School

*Upcoming NGC Schools & CGCI
Flower Show Judges Symposia in California*

*Environmental, Flower Show,
Gardening & Landscape Design*

- **September 10-11, 2011** (Course 1), **October 8-9, 2011**(Course 2), **October 15-16, 2011** (Course 3), **October 22-23, 2011** (Course 4) - Landscape Design Study Program, Series 25, Colfax Garden Club, Chairman: [Myrtle Findley](#).
- **September 27-28, 2011** - Gardening Study School, Course IV, Golden Foothills District. [Sue Bennett](#), Chairman.



- **October 28-29, 2011** - Bi-Refresher (Gardening & Landscape Design), Valley Center Library, Valley Center. Sponsor: Dos Valles Garden Club of Palomar District. Chairman: Barbara Watzke. Co-Chairman: Nancy Abernethy.
- **November 7-8, 2011** - Environmental Studies School, Course 4, Bay Ocean District, San Mateo, Chairman: [Shane Looper](#).
- **February 12-14, 2012** - CGCI Flower Show Judges Symposium, Handlery Hotel, San Diego.

Upcoming CGCI Official Events

(other than schools)

See [CGCI Calendar](#) for club, affiliate, associate plant society and district "special" events.

- **June 5-11, 2011** - National Garden Week.
- **September 15-18, 2011** - CGCI Fall Board Meeting, Stockton Hilton. Host: Valley Lode District, Chairman: [Chelsea Wilson](#).
- **September 21-24, 2011** - NGC Board Meeting, St. Louis, MO.
- **February 6-9, 2012** - Winter Board Meeting, The Cliffs Resort, Pismo Beach. Host: Montana de Oro District.
- **March 21-25, 2012** - San Francisco Flower & Garden Show - CGCI is a sponsor.
- **April 4-6, 2012** - Wildflower Conference, Holiday Inn, Palmdale.
- **April 12-20, 2012** - River Cruise - The Netherlands (CGCI Fundraiser).
- **May 16-19, 2012** - NGC Convention, Buffalo, NY.
- **June 3-7, 2012** - CGCI Convention, Cal Expo Sacramento DoubleTree, Host: Sacramento River Valley District.
- **June 3-9, 2012** - National Garden Week.
- **July 26-28, 2012** - Pacific Region Convention. Host: Alaska State Federation of Garden Clubs.
- **September 17-20, 2012** (tentative), Fall Board Meeting, Blue Lake Casino. Host: Humboldt District.
- **September 26-29, 2012** - NGC Fall Board Meeting, Little Rock, AR.
- **February 2013** - CGCI Winter Board Meeting. Host: Golden Foothills District.
- **May 21-27, 2013** - NGC Convention, Seattle, WA.
- **June 2013** - CGCI Convention. Host: Palomar District.
- **April 2013** - Pacific Region Convention. Host: CGCI.